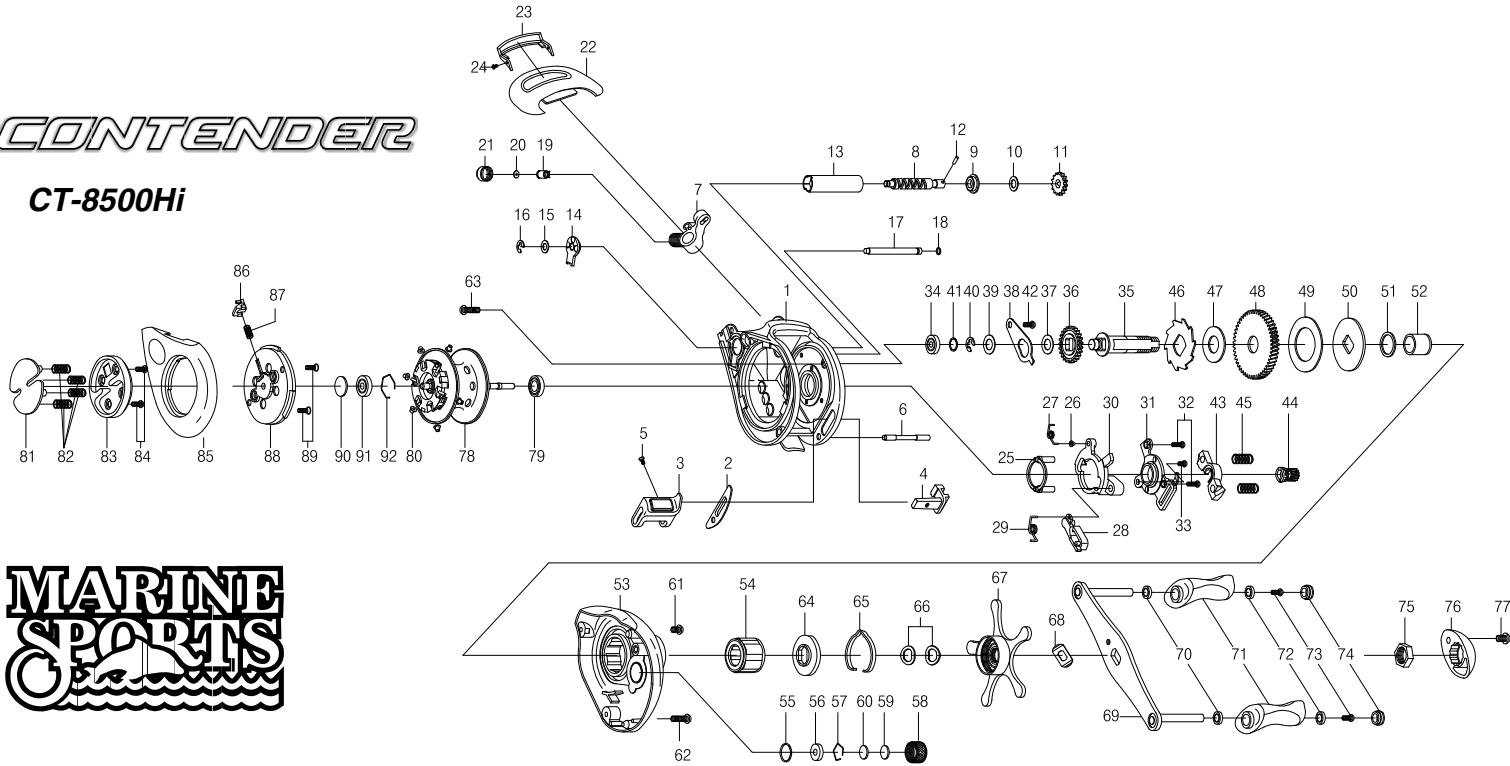


CONTENDER

CT-8500Hi



THE ORDER OF THE PART NUMBER IS BASED ON THAT OF THE REEL ASSEMBLY

NO	PART NAME	NO	PART NAME	NO	PART NAME	NO	PART NAME	NO	PART NAME	NO	PART NAME		
1	FRAME	16	E-RING	31	CAM PLATE	46	RATCHET	61	RIGHT SIDE COVER SCREW (A)	76	HANDLE NUT CAP	91	BALL BEARING
2	CLUTCH BAR PLATE	17	PILLAR	32	CAM PLATE SCREW (A)(+2)	47	RATCHET WASHER	62	RIGHT SIDE COVER SCREW (B)	77	HANDLE NUT CAP SCREW	92	BEARING RETAINER
3	CLUTCH BAR ASSEMBLY	18	O-RING	33	CAM PLATE SCREW (B)	48	DRIVE GEAR	63	RIGHT SIDE COVER SCREW (C)	78	SPOOL ASSEMBLY		
4	CLUTCH LINK	19	LINE GUIDE PAWL	34	BALL BEARING	49	DRAG WASHER (B)	64	CLICK PLATE	79	BALL BEARING		
5	CLUTCH BAR SCREW	20	SPACER(OPTIONAL)	35	CRANK SHAFT	50	DRAG WASHER (D)	65	CLICK LEAF SPRING	80	BRAKE COLLAR(WHITE)(+6)		
6	CLUTCH BAR SUPPORT	21	PAWL CAP	36	IDLER(L)	51	SLEEVE WASHER(OPTIONAL)	66	DRAG SPRING WASHER(+2)	81	LEVER PLATE		
7	LINE GUIDE ASSEMBLY	22	HOOD ASSEMBLY	37	IDLER(L) WASHER(A)(OPTIONAL)	52	SLEEVE	67	STAR DRAG ASSEMBLY	82	LEVER PLATE SPRING(+4)		
8	WORM SHAFT	23	FRONT COVER	38	BEARING PLATE	53	RIGHT SIDE COVER	68	LEAF SPRING	83	LOCK LEVER		
9	WORM SHAFT BUSHING (A)	24	FRONT COVER SCREW	39	IDLER(L) WASHER (B)	54	ONE WAY CLUTCH	69	HANDLE ASSEMBLY	84	LOCK LEVER SCREW(+2)		
10	IDLER(S) WASHER(OPTIONAL)	25	YOKE HOLDER	40	E-RING	55	O-RING	70	BALL BEARING(+2)	85	LEFT SIDE COVER ASSEMBLY		
11	IDLER(S)	26	CLUTCH SPRING BUSHING	41	CRANK SHAFT SPACER(OPTIONAL)	56	BUSHING	71	HANDLE KNOB(+2)	86	LOCK PIN		
12	WORM SHAFT PIN	27	CLUTCH SPRING	42	BEARING PLATE SCREW	57	BEARING RETAINER	72	BALL BEARING(+2)	87	LOCK PIN SPRING		
13	LINE GUIDE PIPE	28	RETURN PAWL	43	PINION YOKE	58	CAST CONTROL CAP	73	SCREW(+2)	88	SPOOL COVER ASSEMBLY		
14	WORM SHAFT BUSHING (B)	29	RETURN PAWL SPRING	44	PINION GEAR	59	TENSION WASHER	74	HANDLE KNOB CAP(+2)	89	SPOOL COVER SCREW(+2)		
15	WORM SHAFT WASHER(OPTIONAL)	30	CLUTCH CAM	45	PINION YOKE SPRING(+2)	60	SPOOL SPACER (B)	75	HANDLE NUT	90	SPOOL SPACER(A)		