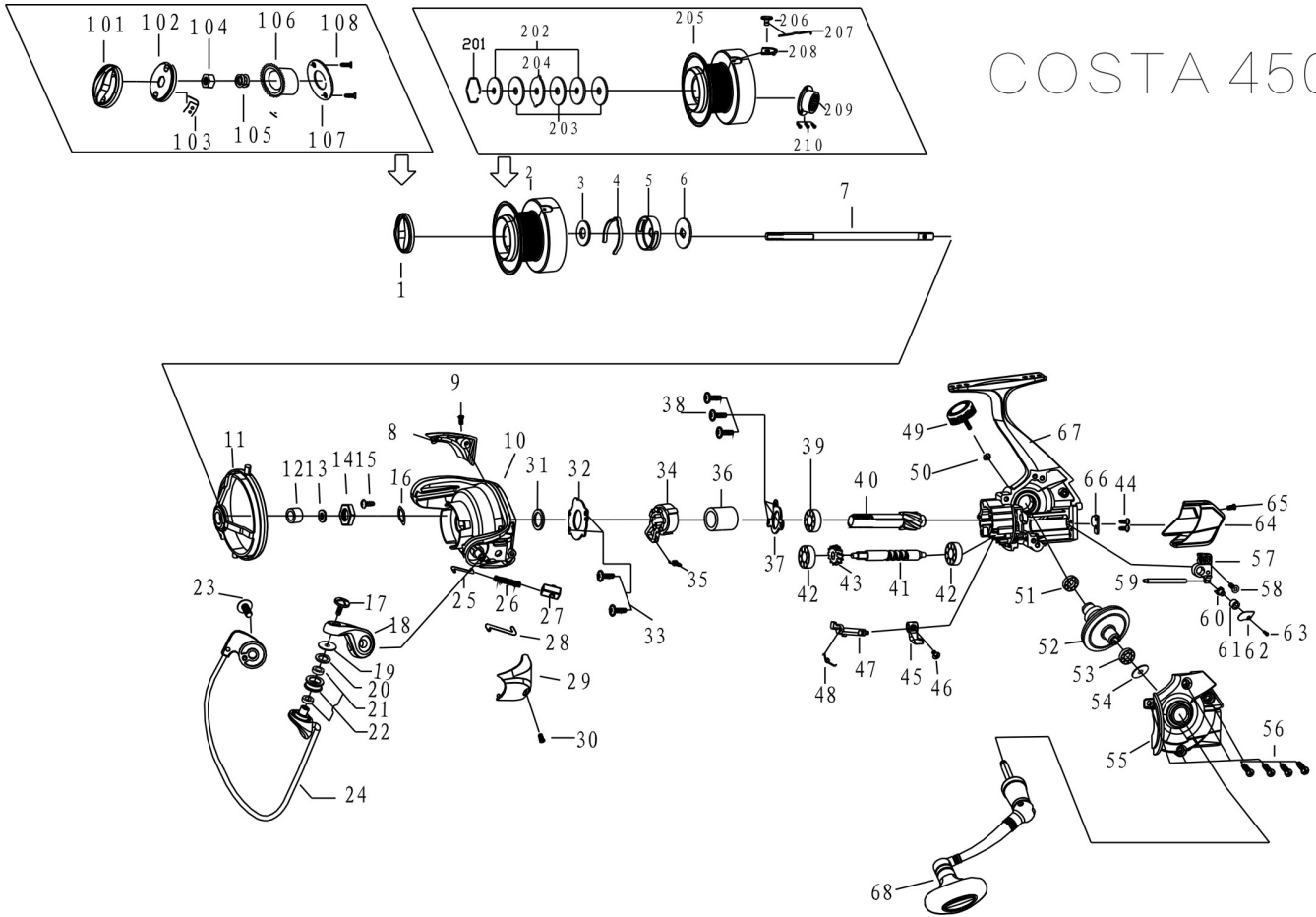


# COSTA 4500



- |                                     |   |
|-------------------------------------|---|
| 1 drag knob assembly                | 44 worm shaft ball bearing fixed washer screw |
| 2 spool                             | 45 anti-reverse switch                        |
| 3 spool click gear fixed plate      | 46 anti-reverse switch screw                  |
| 4 spool click gear                  | 47 anti-rever shaft                           |
| 5 spool click gear seat             | 48 anti-reverse spring                        |
| 6 spool click gear seat key washer  | 49 gear washer                                |
| 7 mian shaft                        | 50 handle screw cap                           |
| 8 bail holder side cover            | 51 body ball bearing                          |
| 9 bail holder side cover screw      | 52 drive gear                                 |
| 10 rotor                            | 53 body ball bearing                          |
| 11 seal ring                        | 54 washer                                     |
| 12 brass collar                     | 55 body cover                                 |
| 13 key washer                       | 56 body cover screw                           |
| 14 hexangular cap                   | 57 oscillatting slider                        |
| 15 hexangular fixed screw           | 58 oscillatting slider screw                  |
| 16 hexangular cap washer            | 59 oscillatting slider pin                    |
| 17 line roller screw                | 60 connect pawl                               |
| 18 bail arm                         | 61 connect pawl bushing                       |
| 19 line roller bushing              | 62 connect pawl fixed washer                  |
| 20 line roller washer               | 63 bushing fixed screw                        |
| 21 line roller ball bearing bushing | 64 rear body decorated cover                  |
| 22 line roller                      | 65 rear body decorated cover screw            |
| 23 bail holder screw                | 66 worm shaft ball bearing fixed washer two)  |
| 24 bail assembly                    | 67 body                                       |
| 25 ball trip shaft                  | 68 handle                                     |
| 26 trip shaft spring                | 101 drag knob decorated cover                 |
| 27 trip shaft spring bushing        | 102 drag knob                                 |
| 28 kick lever                       | 103 drag knob click ring                      |
| 29 bail arm side cover              | 104 drag knob nut                             |
| 30 bail arm side cover screw        | 105 drag knob click ball                      |
| 31 spool washer                     | 106 impelling seat                            |
| 32 one way clutch fixed cover       | 107 impelling seat fixed cover                |
| 33 one way clutch fixed cover screw | 108 impelling seat fixed cover screw          |
| 34 one way clutch ball bearing      | 201 hexangular retainer                       |
| 35 one way clutch spring            | 202 key washer                                |
| 36 inner ring                       | 203 brake washer                              |
| 37 Ball bearing fixed plate         | 204 eared washer                              |
| 38 Ball bearing fixed plate screw   | 205 spool                                     |
| 39 pinion gear ball bearing         | 206 line hook                                 |
| 40 pinion gear                      | 207 line hook spring                          |
| 41 worm shaft                       | 208 line hook copper pin                      |
| 42 worm shaft ball bearing          | 209 spool clicker seat                        |
| 43 idle gear                        | 210 spool clicker seat screw                  |

**MARINE  
SPORTS**