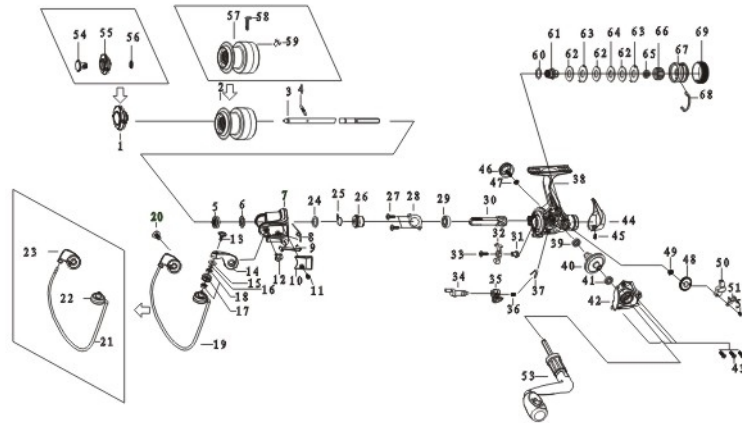


# PRISMA

## MICRO



- |                              |                                  |                       |
|------------------------------|----------------------------------|-----------------------|
| 1 drag knob assembly         | 33 anti-reverse pawl screw       | 62 drag washer        |
| 2 spool assembly             | 34 anti-reverse shaft            | 63 eared washer       |
| 3 main shaft                 | 35 anti-reverse switch           | 64 key washer         |
| 4 main shaft pin             | 36 anti-reverse screw            | 65 drag spring        |
| 5 pinion gear nut            | 37 anti-reverse spring           | 66 drag screw         |
| 6 rotor washer               | 38 body                          | 67 rear drag knob     |
| 7 rotor                      | 39 body ball bearing             | 68 rear drag retainer |
| 8 ball arm spring            | 40 pinion gear                   | 69 decorated ring     |
| 9 kick lever                 | 41 body cover ball bearing       |                       |
| 10 ball arm cover            | 42 body cover                    |                       |
| 11 ball arm cover screw      | 43 body cover screw              |                       |
| 12 ball arm screw            | 44 body back decorated cover     |                       |
| 13 line roller screw         | 45 back decorated cover screw    |                       |
| 14 ball arm                  | 46 handle cap washer             |                       |
| 15 line roller bushing       | 47 handle cap washer             |                       |
| 16 line roller washer        | 48 oscillating gear              |                       |
| 17 line roller ball bearing  | 49 oscillating gear ball bearing |                       |
| 18 line roller               | 50 oscillating slide             |                       |
| 19 ball arm assembly         | 51 oscillating slide retainer    |                       |
| 20 ball holder screw         | 52 oscillating slide screw       |                       |
| 21 ball arm                  | 53 handle assembly               |                       |
| 22 line roller               | 54 drag knob                     |                       |
| 23 ball holder               | 55 spool cover                   |                       |
| 24 rotor washer              | 56 drag retainer                 |                       |
| 25 silent spring             | 57 spool                         |                       |
| 26 silent collar             | 58 line hook                     |                       |
| 27 pinion gear screw         | 59 line hook bras needle         |                       |
| 28 ball bearing fixed board  | 60 spool click gear              |                       |
| 29 pinion gear ball bearing  | 61 reared drag click washer      |                       |
| 30 pinion gear               |                                  |                       |
| 31 anti-reverse pawl bushing |                                  |                       |
| 32 anti-reverse pawl         |                                  |                       |

**MARINE**  
**SPORTS**