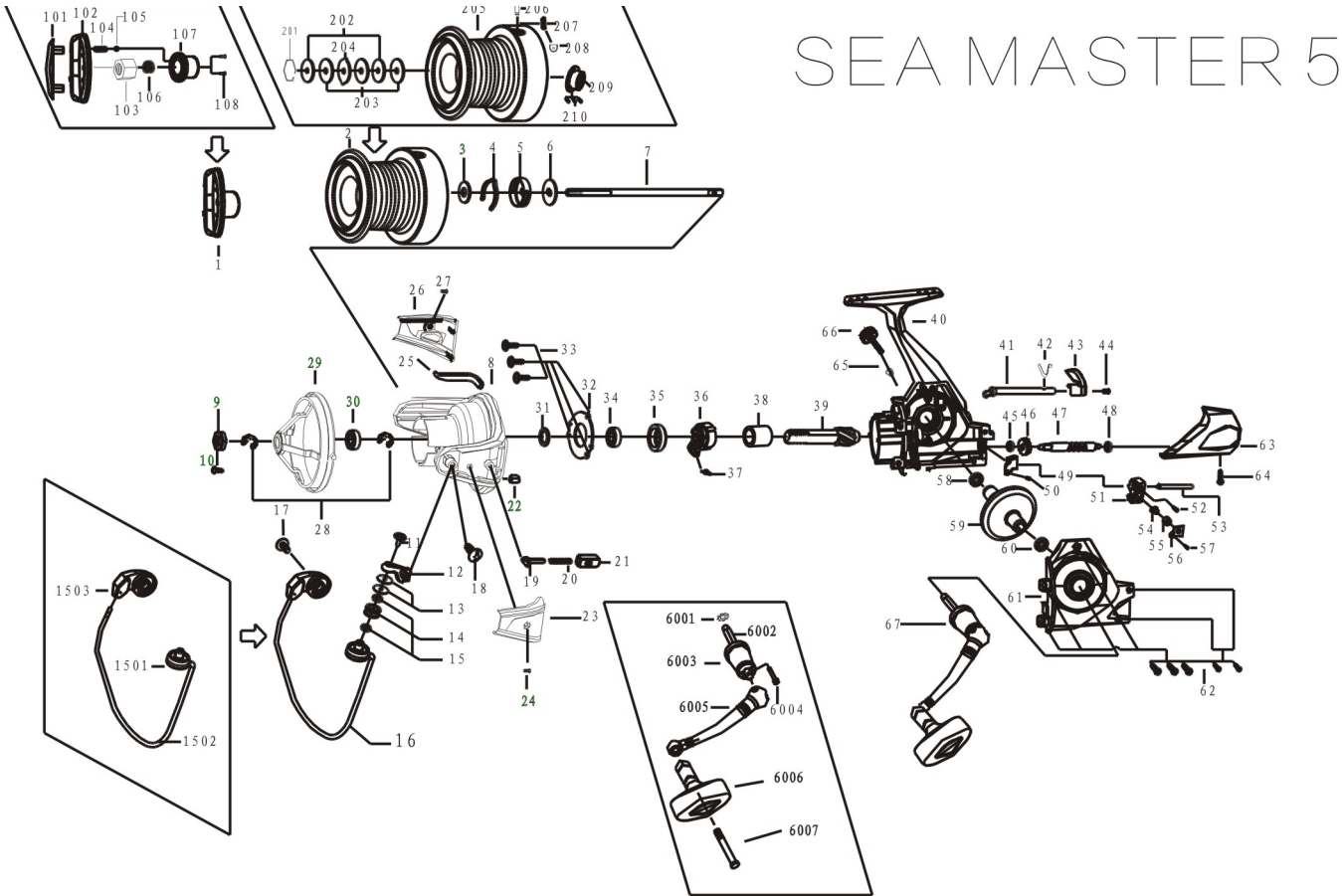


# SEAMASTER 5000



- |                                    |  |                                |
|------------------------------------|--|--------------------------------|
| 1 Drag Knob                        | 35 one way clutch bushing                    | 101 drag knob decoated ring    |
| 2 Spool assy                       | 36 one way clutch                            | 102 drag knob                  |
| 3 spool click fixed washer         | 37 one way clutch spring                     | 103 drag knob cover            |
| 4 spool click ring                 | 38 one way clutch inner ring                 | 104 drag knob click gear rubg  |
| 5 spool click ring seat            | 39 pinion gear                               | 105 click ball                 |
| 6 spool click ring seat key washer | 40 body                                      | 106 brake spring               |
| 7 main shaft                       | 41 anti-reverse cam                          | 107 impelling seat             |
| 8 rotor                            | 42 anti-reverse spring                       | 108 impelling seat fixed plate |
| 9 rotor nut                        | 43 anti-reverse switch                       | spool assy                     |
| 10 rotor nut screw                 | 44 anti-reverse switch screw                 | 201 Retaining Clip             |
| 11 line roller fixed screw         | 45 pinion gear BB                            | 202 key washer                 |
| 12 bail arm                        | 46 idle gear                                 | 203 brake washer               |
| 13 line roller washer              | 47 worm gear                                 | 204 eared washer               |
| 14 line roller                     | 48 worm gear ball bearing                    | 205 spool                      |
| 15 line roller bushing             | 49 worm gear ball bearing fixed washer       | 206 line clip                  |
| 16 bail assy                       | 50 worm gear ball bearing fixed washer screw | 207 line clip spring           |
| 17 bail holder fixed screw         | 51 oscillating slider                        | 208 line clip washer           |
| 18 bail arm fixed screw            | 52 oscillating slider screw                  | 209 spool click washer         |
| 19 bail trip shaft                 | 53 slider fixed pin                          | 210 spool click washer screw   |
| 20 trip shaft spring               | 54 connect pawl                              | bail assy                      |
| 21 spring fixed plate              | 55 connect pawl bushing                      | 1501 line roller shaft         |
| 22 balanced block                  | 56 connect pawl fixed washer                 | 1502 bail                      |
| 23 bail arm cover                  | 57 connect pawl fixed washer screw           | 1503 bail holder               |
| 24 bail arm cover screw            | 58 body ball bearing                         | handle assy                    |
| 25 kick lever                      | 59 drive gear                                | 6001: Hex washer               |
| 26 bail holder                     | 60 body cover ball bearing                   | 6002: Hex Shaft                |
| 27 bail holder screw               | 61 body cover                                | 6003: handle Collar            |
| 28 E-Clip                          | 62 body cover screw                          | 6004: Handle Pivot             |
| 29 line protector                  | 63 rear cover                                | 6005: handle                   |
| 30 line protector BB               | 64 rear cover screw                          | 6006: handl knob               |
| 31 rotor washer                    | 65 hexangular washer                         | 6007: rivet bushing            |
| 32 OWC fixed washer                | 66 handle cap                                |                                |
| 33 OWC fixed washer crew           | 67 handle assy                               |                                |
| 34 pinion gear BB                  |  |                                |